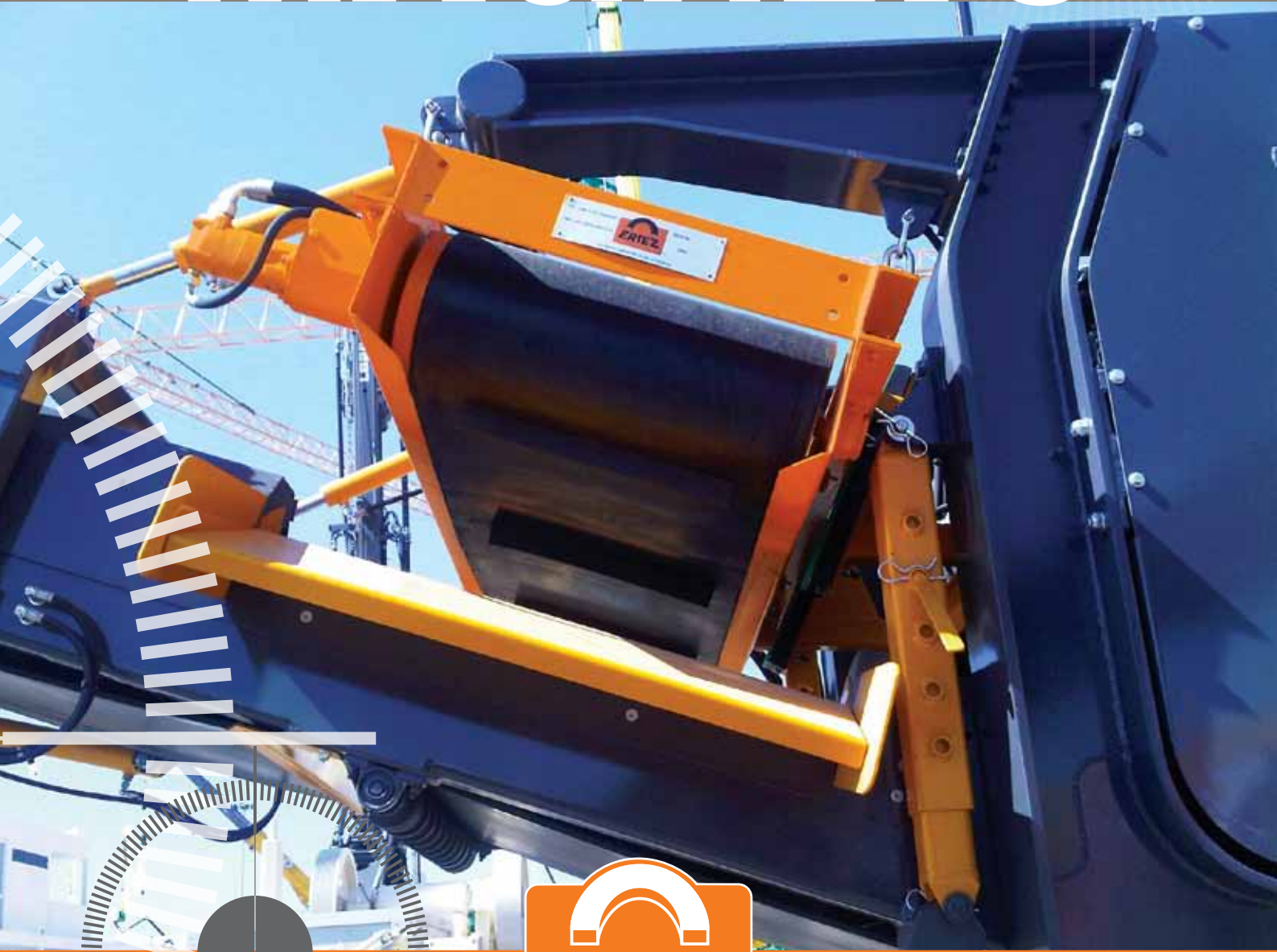


# SUSPENDED PERMANENT MAGNETS



[WWW.ERIEZ.COM](http://WWW.ERIEZ.COM)

RUGGED RELIABLE RECOVERY

# SUSPENDED PERMANENT MAGNETS



Suspended Permanent Magnets are used in a range of applications and industries to recover valuable ferrous metals and protect downstream equipment.



## FEATURES

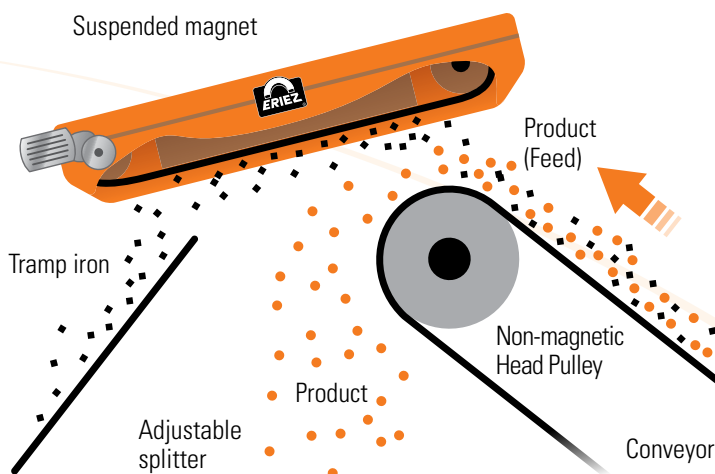
- 200-400mm suspension heights
- Multiple magnet circuit designs
- Hydraulic and electric motor options
- Range of sensors available
- To suit 500-2000mm wide conveyors as standard, with larger units available upon request
- ATEX certified magnets available

## APPLICATIONS

- Tramp iron removal from a range of materials
- Ideal for fitting to mobile crushing, screening and shredding machines
- Recovery of steel cans from MSW
- Removal of nails and screws from waste wood
- Protection of vital downstream equipment in mines and quarries

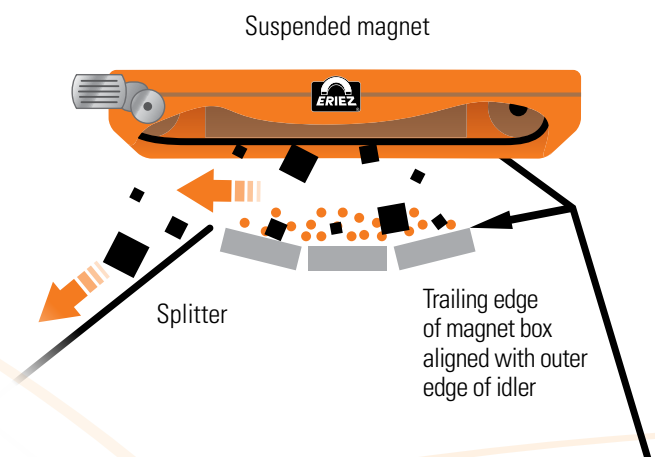
## IN-LINE POSITION

- Maximum iron removal
- Material is moving towards the magnet thereby facilitating iron capture and removal
- Often requires a smaller, less expensive magnet than equivalent cross-belt
- Extension magnets available if required



## CROSS-BELT

- Easy to retro-fit into existing installations
- Simple iron discharge and collection
- Ideal for lightweight mobile machinery
- Often requires a larger magnet to match the performance of in-line magnets



# ERIEZ MODELS



## CP MAGNETS

CP magnets are ideal for general tramp iron removal from a range of materials. CP magnets utilise a basic single pole design for cost effective but reliable performance.

\*Multiple sizes available in stock at Eriez Europe

## SP MAGNETS

SP magnets use larger magnet blocks with a multi pole design to enable use at increased suspension heights and to achieve maximum iron removal.

## TP MAGNETS

TP magnets incorporate a higher strength, dual pole magnet design to offer improved separation of smaller tramp iron. A horizontal lift orientation also reduces belt wear.

\*Multiple sizes available in stock at Eriez Europe

## RP MAGNETS

RP magnets are constructed with high strength, lightweight, neodymium (rare earth) magnetic circuits. A high gradient, high performance magnet that can be used where weight and space limitations are a factor.

MODEL	MAGNET	SUSPENSION (MAXIMUM)	APPLICATIONS
CP	Centre-pole	200-350 mm	MRF plants, mobile crushers, picking belts, quarries, concrete re-bar
TP	Twin-pole	200-350 mm	Waste wood, mobile shredders, picking belts, recycling
SP	Multi-pole	Up to 400 mm	Large quarry/mining conveyors, protection of downstream equipment
RP	Rare Earth	200-250 mm	Mobile crushers/shredders/screens, picking belts, recycling

## SELF-CLEANING

- Heavy-duty vulcanised belt and pulley setup discharges iron parts from the magnet
- Available in a range of sizes to meet installation requirements
- Low maintenance
- All models available with electric or hydraulic drive



## MANUAL-CLEANING

- Ideal where quantity of tramp iron present is low
- Magnet stripper plate can be included to facilitate cleaning
- Lightweight and small size for confined installations
- Few wear parts

